

# \$333,900 - 5 Parkland Drive, Sylvan Lake

MLS® #A2224706

**\$333,900**

5 Bedroom, 2.00 Bathroom, 1,017 sqft  
Residential on 0.09 Acres

Lakeview Heights, Sylvan Lake, Alberta

Affordable & Upgraded Half Duplex in  
Beautiful Sylvan Lake – No Condo Fees!  
Awesome layout!

Discover the charm of year-round living in  
Sylvan Lake – a vibrant community of  
16,000 residents enjoying small-town  
friendliness with big-city amenities. Just 20  
minutes west from Red Deer, this lakeside  
town is not only Alberta's top vacation  
destination with over a million visitors annually,  
but also a wonderful place to call home.

This well-maintained 1/2 duplex offers  
exceptional value with no condo fees, a fully  
fenced backyard, and numerous recent  
upgrades, including:

- New windows in the basement.

- New roof 2019.

- Updated plumbing and electrical.

- newer kitchen on the main floor.

- New 50-gallon natural gas hot water tank  
(11-year warranty remaining).

- High-speed internet (1.5 Gbps) available.

- Enclosed yard with gate just done.

Main Floor Features:

- 3 bedrooms and 1 full bath.

- Modern tile and laminate flooring  
throughout.

- Balcony off the main living space.

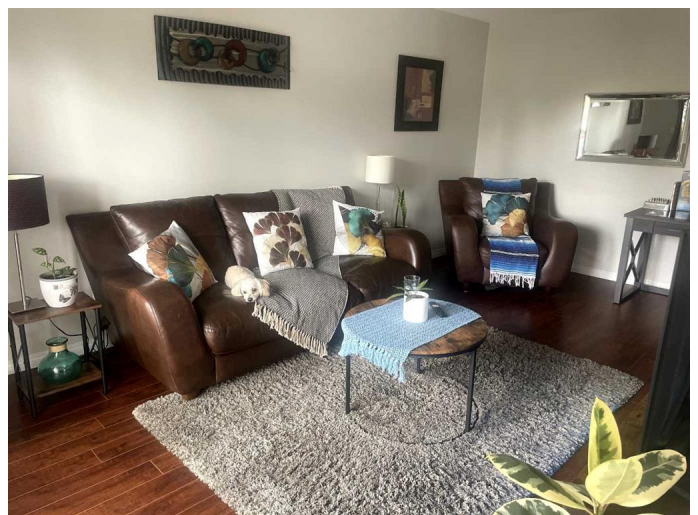
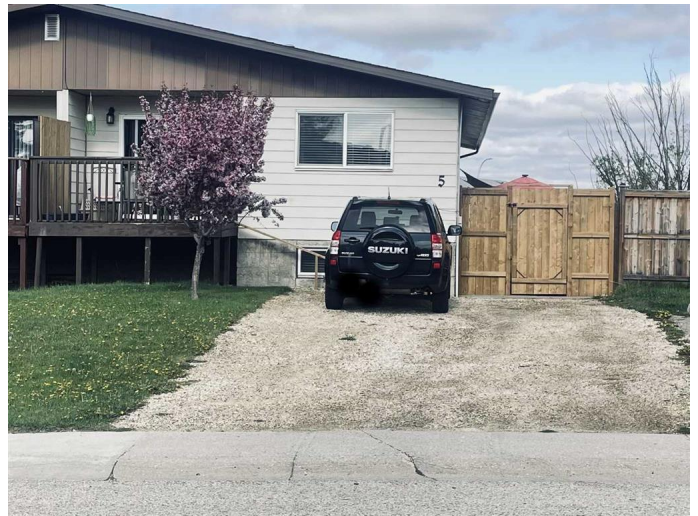
- Kitchen with fridge, stove, dishwasher,  
washer & dryer.

Fully Finished Basement:

- Spacious oak kitchen with 5 appliances.

- Large full bathroom with elegant tiling.

- Separate laundry (washer & dryer)



included).

â€¢ Comfortable living room, perfect for guests or extended family in one house.

Located in a quiet, family-friendly neighborhood, this home is across from a park and walking distance to schools, grocery stores, coffee shops, and more. The stunning lake and sandy beaches are just 15 minutes away on foot â€” or a 2-minute drive.

Whether youâ€™re a large family, an investor, or someone seeking a relaxed lifestyle, this move-in ready home is an ideal opportunity in a growing and desirable community.

Built in 1977

**Essential Information**

MLS® #	A2224706
Price	\$333,900
Bedrooms	5
Bathrooms	2.00
Full Baths	2
Square Footage	1,017
Acres	0.09
Year Built	1977
Type	Residential
Sub-Type	Semi Detached
Style	Side by Side, Bi-Level
Status	Active

**Community Information**

Address	5 Parkland Drive
Subdivision	Lakeview Heights
City	Sylvan Lake
County	Red Deer County
Province	Alberta
Postal Code	T4S 1J5

**Amenities**

Parking Spaces	2
----------------	---

Parking	Off Street
---------	------------

### **Interior**

Interior Features	Vinyl Windows, Low Flow Plumbing Fixtures
Appliances	Dishwasher, Electric Stove, Refrigerator, Washer/Dryer
Heating	Forced Air, Natural Gas
Cooling	None
Has Basement	Yes
Basement	Exterior Entry, Finished, Full

### **Exterior**

Exterior Features	Other
Lot Description	Landscaped, Level, Low Maintenance Landscape, Dog Run Fenced In
Roof	Asphalt Shingle
Construction	Wood Frame
Foundation	Poured Concrete

### **Additional Information**

Date Listed	June 2nd, 2025
Days on Market	14
Zoning	R2

### **Listing Details**

Listing Office	ComFree
----------------	---------

Data is supplied by Pillar 9â„¢ MLS® System. Pillar 9â„¢ is the owner of the copyright in its MLS® System. Data is deemed reliable but is not guaranteed accurate by Pillar 9â„¢. The trademarks MLS®, Multiple Listing Service® and the associated logos are owned by The Canadian Real Estate Association (CREA) and identify the quality of services provided by real estate professionals who are members of CREA. Used under license.