

\$349,900 - 68 Elliot Crescent, Red Deer

MLS® #A2216334

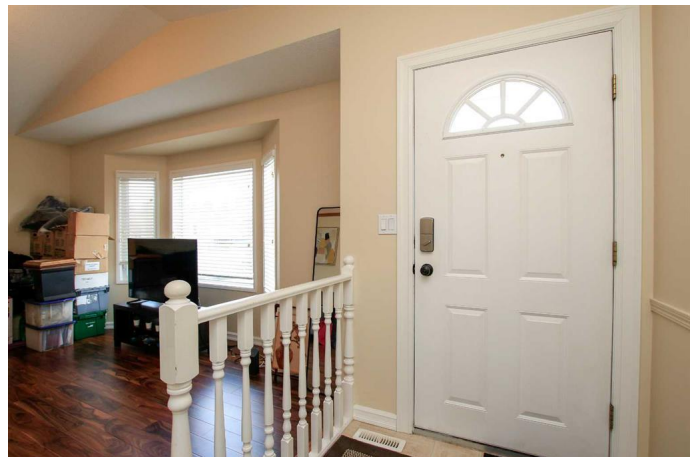
\$349,900

3 Bedroom, 2.00 Bathroom, 1,117 sqft

Residential on 0.08 Acres

Eastview Estates, Red Deer, Alberta

FULLY DEVELOPED 3 BEDROOM, 2 BATHROOM 4-LEVEL SPLIT ~ WALKOUT BASEMENT ~ FULLY FENCED WEST FACING BACKYARD W/PAVED PARKING PAD ~ Recent updates include; plumbing (2020), furnace, hot water on demand and new appliances (2022), a few new windows ~ Bright foyer welcomes you and opens to a sunken living room with vaulted ceilings and a large bay window that overlooks the front yard ~ The kitchen offers a functional layout with ample cabinet and counter space, upgraded stainless steel appliances and a window above the sink ~ Easily host large gatherings in the sunny dining room with easy access to the side entry ~ The spacious primary bedroom can easily accommodate a king size bed plus multiple pieces of furniture, has dual closets and a cheater door to the 4 piece main bathroom ~ Second bedroom conveniently located across from the bathroom ~ The lower level has large above grade windows plus a separate entry with walkout access to the patio and backyard ~ Illegally suited with an open concept living space featuring a corner fireplace with stone and a mantle and a kitchenette ~ 3 piece bathroom ~ The basement has a large bedroom with mirrored closets, laundry and space for storage ~ The west facing backyard has a large concrete patio, shed, and is fully fenced with back alley access and a concrete parking pad ~ Located close to multiple parks, walking trails, playgrounds and transit with easy access to



multiple schools, shopping and all other amenities.

Built in 1991

Essential Information

| | |
|----------------|---------------|
| MLS® # | A2216334 |
| Price | \$349,900 |
| Bedrooms | 3 |
| Bathrooms | 2.00 |
| Full Baths | 2 |
| Square Footage | 1,117 |
| Acres | 0.08 |
| Year Built | 1991 |
| Type | Residential |
| Sub-Type | Detached |
| Style | 4 Level Split |
| Status | Active |

Community Information

| | |
|-------------|--------------------|
| Address | 68 Elliot Crescent |
| Subdivision | Eastview Estates |
| City | Red Deer |
| County | Red Deer |
| Province | Alberta |
| Postal Code | T4R 2J6 |

Amenities

| | |
|----------------|--|
| Utilities | Electricity Connected, Natural Gas Connected |
| Parking Spaces | 2 |
| Parking | Alley Access, Parking Pad |

Interior

| | |
|-------------------|--|
| Interior Features | Central Vacuum, Closet Organizers, High Ceilings, Laminate Counters, Separate Entrance, Storage, Vaulted Ceiling(s), Vinyl Windows |
| Appliances | Dishwasher, Microwave, Refrigerator, See Remarks, Stove(s), Washer/Dryer |
| Heating | Forced Air |
| Cooling | None |

| | |
|-----------------|---|
| Fireplace | Yes |
| # of Fireplaces | 1 |
| Fireplaces | Family Room, Gas |
| Has Basement | Yes |
| Basement | Exterior Entry, Finished, Full, Suite, Walk-Out |

Exterior

| | |
|-------------------|--|
| Exterior Features | Private Entrance, Private Yard, Storage |
| Lot Description | Back Lane, Back Yard, Front Yard, Fruit Trees/Shrub(s), Landscaped, Rectangular Lot, Treed |
| Roof | Asphalt Shingle |
| Construction | Vinyl Siding |
| Foundation | Poured Concrete |

Additional Information

| | |
|----------------|---------------|
| Date Listed | May 1st, 2025 |
| Days on Market | 11 |
| Zoning | R1 |

Listing Details

| | |
|----------------|------------------------|
| Listing Office | Lime Green Realty Inc. |
|----------------|------------------------|

Data is supplied by Pillar 9â„¢ MLS® System. Pillar 9â„¢ is the owner of the copyright in its MLS® System. Data is deemed reliable but is not guaranteed accurate by Pillar 9â„¢. The trademarks MLS®, Multiple Listing Service® and the associated logos are owned by The Canadian Real Estate Association (CREA) and identify the quality of services provided by real estate professionals who are members of CREA. Used under license.