

# \$887,000 - 38514 Range Road 263, Rural Lacombe County

---

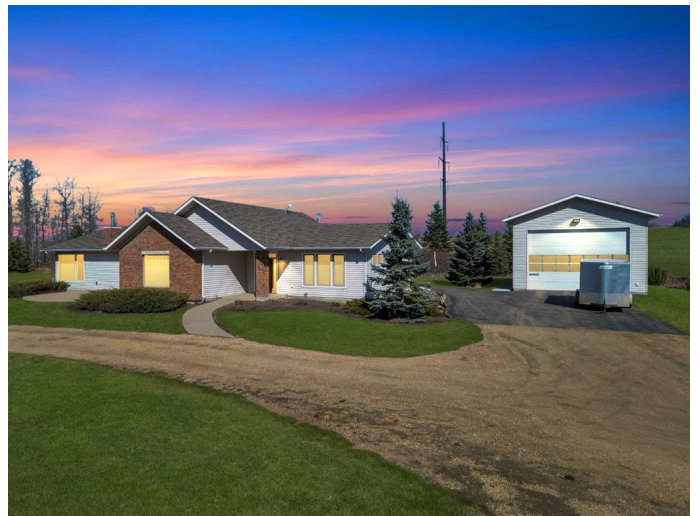
MLS® #A2213947

**\$887,000**

3 Bedroom, 3.00 Bathroom, 2,432 sqft  
Residential on 4.00 Acres

NONE, Rural Lacombe County, Alberta

IMMEDIATE POSSESSION - Welcome to this ranch-style home and fully finished, heated shop sitting on 4.0 acres in a quiet, convenient location just 20 minutes between Red Deer and Lacombe and easy commuting distance to both Prentis and Joffre chemical sites. This well-loved home, built in 2007, offers 2432 sq ft of spacious living with 3 bedrooms, 3 ½ baths, laundry room, and mudroom, all on one level. Entering this home you first notice the gleaming tile floors and spacious living areas flooded with natural light streaming from large windows in every room. A large sitting area, with recessed ceilings, opens into the centrally located kitchen featuring solid wood cabinetry, granite counter tops, a hidden pantry, large island with seating, and a workspace perfectly blended into the functional design. Garden doors off the dining area open to a south-facing, cement patio perfect for a peaceful morning coffee or afternoon relaxation. The kitchen leads to another cozy sitting room anchored with a brick-surround, natural gas fireplace and views into the spacious yard through the large windows facing south and west. Stepping through the kitchen you will find a large, bright bedroom with huge closets, a half-bath leading to the back entrance, a mudroom with ample storage, as well as a separate laundry room with stainless sink and wood cabinets. A private patio off the back entrance is perfect



for barbeques, entertaining and enjoying the peaceful views of the sky, nature and adjacent agricultural land. The primary suite includes a walk-in closet and full ensuite with double sinks and tiled, mobility accessible shower. An additional bedroom and another full bath round out this thoughtful floorplan. Included on this property is a fully finished, 26 ft x 40 ft, heated shop featuring 16-foot ceilings, a large, 14 ft by 20 ft, overhead door, concrete floor with drain, utility room, water and 100 AMP power service. This shop would be a great place to enjoy hobbies, set up a business or provide RV storage and is wired for a backup generator offering uninterrupted operation. The home is heated by a natural gas, forced-air furnace with in-floor boiler support and includes a Beam central vacuum system. Water is supplied by a drilled well and a newer septic system (installed in 2019). The home is well maintained, and the mechanical systems are enrolled in an Annual Mechanical Service Program showing all maintenance and inspections are up to date. Outside, the land is surrounded by a mature spruce and deciduous shelterbelt, a firepit by the pond and a long-curved gravel driveway which provides privacy from the road in front of the property. There is plenty of space to create additional parking, play areas for children and to enjoy gardening and nature. This tranquil home is vacant and ready for you to move in and start enjoying all that rural living has to offer.

Built in 2007

### **Essential Information**

MLS® #	A2213947
Price	\$887,000
Bedrooms	3
Bathrooms	3.00

Full Baths	2
Half Baths	1
Square Footage	2,432
Acres	4.00
Year Built	2007
Type	Residential
Sub-Type	Detached
Style	Acreage with Residence, Bungalow
Status	Active

### **Community Information**

Address	38514 Range Road 263
Subdivision	NONE
City	Rural Lacombe County
County	Lacombe County
Province	Alberta
Postal Code	T4L 2N2

### **Amenities**

Utilities	Electricity Connected, Natural Gas Connected, Sewer Connected, Water Connected
Parking Spaces	1
Parking	Single Garage Detached
# of Garages	1

### **Interior**

Interior Features	Built-in Features, Central Vacuum, Kitchen Island, Open Floorplan
Appliances	Dishwasher, Freezer, Gas Stove, Microwave, Refrigerator, Washer/Dryer, Window Coverings
Heating	Boiler, In Floor, Natural Gas
Cooling	None
Fireplace	Yes
# of Fireplaces	1
Fireplaces	Brick Facing, Gas, Living Room
Basement	None

### **Exterior**

Exterior Features	Garden, Private Entrance, Private Yard
Lot Description	Front Yard, Garden, Low Maintenance Landscape, Landscaped

Roof	Asphalt Shingle
Construction	Manufactured Floor Joist, Vinyl Siding, Wood Frame
Foundation	Poured Concrete

### **Additional Information**

Date Listed	May 26th, 2025
Days on Market	95
Zoning	AG

### **Listing Details**

Listing Office	RE/MAX real estate central alberta
----------------	------------------------------------

Data is supplied by Pillar 9â„¢ MLS® System. Pillar 9â„¢ is the owner of the copyright in its MLS® System. Data is deemed reliable but is not guaranteed accurate by Pillar 9â„¢. The trademarks MLS®, Multiple Listing Service® and the associated logos are owned by The Canadian Real Estate Association (CREA) and identify the quality of services provided by real estate professionals who are members of CREA. Used under license.