

# \$785,000 - 30, 28342 Township Road 384, Rural Red Deer County

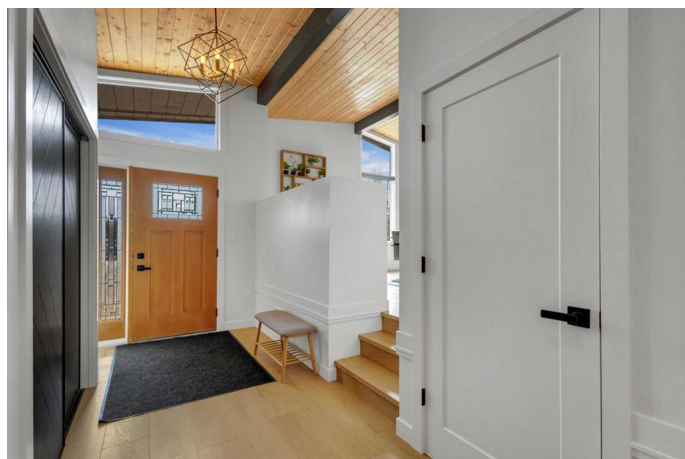
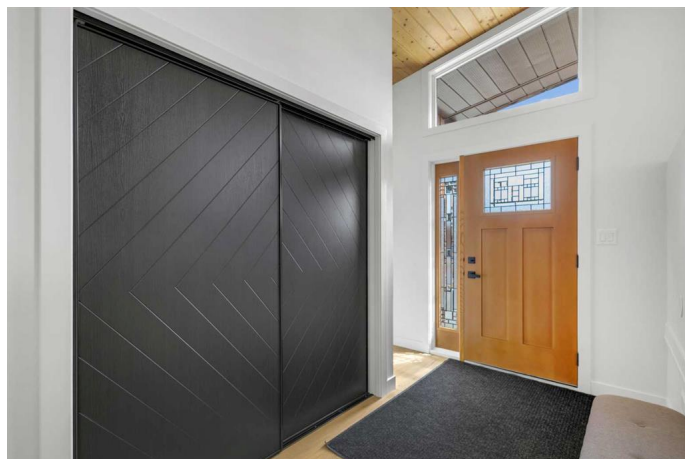
MLS® #A2209909

**\$785,000**

4 Bedroom, 3.00 Bathroom, 1,493 sqft  
Residential on 1.58 Acres

Poplar Ridge, Rural Red Deer County, Alberta

**STUNNING RENOVATION | NO REAR NEIGHBOURS** ~ Welcome to your dream acreage in the highly sought-after community of Poplar Ridge, just minutes from Red Deer and Sylvan Lake. This beautifully transformed 4-bedroom, 3-bathroom BUNGALOW sits on a private pie-shaped 1.58 acre lot backing onto open farmland with no neighbours behind and room to build a future shop. ~ **RENOVATED IN 2022**, this home features a bright white designer kitchen with quartz countertops, full-height tile backsplash, black stainless steel appliances, and a large island with seatingâ€”perfect for cooking and entertaining. The dining area and living room are highlighted by a vaulted pine ceiling and cozy wood-burning fireplace, adding warmth and character to the open main living space. ~ The primary bedroom offers a spa-like 3-piece ensuite with quartz vanity, cozy heated floors and marble textured shower, plus a custom walk-in closet by Canadian Closet. A second main floor room works well as an office or guest space, and a stylish 2-piece powder room adds function. ~ The fully finished basement is ideal for teens or guests, featuring two large bedrooms, a new 4-piece bathroom, and a spacious rec room. All new flooring throughout: luxury vinyl plank in main areas and quality carpet in bedrooms and basement. ~ Even more extensive updates in 2022 include: furnace, hot water tank,



pressure tank, electrical-plumbing-septic brought up to code, new LED lighting and modern black fixtures throughout with contrasting white walls & finishing, PLUS UPGRADED WINDOWS (main level prior to purchase, basement in 2022). ~ Outside, enjoy the peaceful setting surrounded by mature trees, a west-facing backyard with space to garden or entertain, and a long driveway leading to a 40â€™ x 24â€™ triple car garage with two heated bays. ~ Located just minutes from Poplar Ridge Elementary School and highway access, this move-in-ready home offers a rare opportunity to own an updated acreage in a truly unbeatable location. ~ Don't miss your chance to enjoy the privacy, style, and space this stunning property has to offer!

Built in 1980

**Essential Information**

MLS® #	A2209909
Price	\$785,000
Bedrooms	4
Bathrooms	3.00
Full Baths	2
Half Baths	1
Square Footage	1,493
Acres	1.58
Year Built	1980
Type	Residential
Sub-Type	Detached
Style	Acreage with Residence, Bungalow
Status	Active

**Community Information**

Address	30, 28342 Township Road 384
Subdivision	Poplar Ridge
City	Rural Red Deer County

County	Red Deer County
Province	Alberta
Postal Code	T4S 2B6

### Amenities

Parking Spaces	6
Parking	Driveway, Heated Garage, Insulated, Asphalt, Triple Garage Attached
# of Garages	3

### Interior

Interior Features	Closet Organizers, Kitchen Island, Pantry, Quartz Counters, Recessed Lighting, Storage, Vaulted Ceiling(s)
Appliances	See Remarks
Heating	Forced Air, Natural Gas
Cooling	None
Fireplace	Yes
# of Fireplaces	1
Fireplaces	Living Room, Wood Burning
Has Basement	Yes
Basement	Finished, Full

### Exterior

Exterior Features	Other
Lot Description	Many Trees, Pie Shaped Lot
Roof	Asphalt Shingle
Construction	Wood Frame
Foundation	Wood

### Additional Information

Date Listed	April 9th, 2025
Days on Market	21
Zoning	R-1

### Listing Details

Listing Office	Greater Property Group
----------------	------------------------

Data is supplied by Pillar 9â„¢ MLS® System. Pillar 9â„¢ is the owner of the copyright in its MLS® System. Data is deemed reliable but is not guaranteed accurate by Pillar 9â„¢. The trademarks MLS®, Multiple Listing Service® and the associated logos are owned by The Canadian Real Estate Association (CREA) and identify the quality of services provided by real estate professionals who are members of CREA. Used under license.