

\$325,000 - 3019, 35468 Range Road 30, Rural Red Deer County

MLS® #A2205055

\$325,000

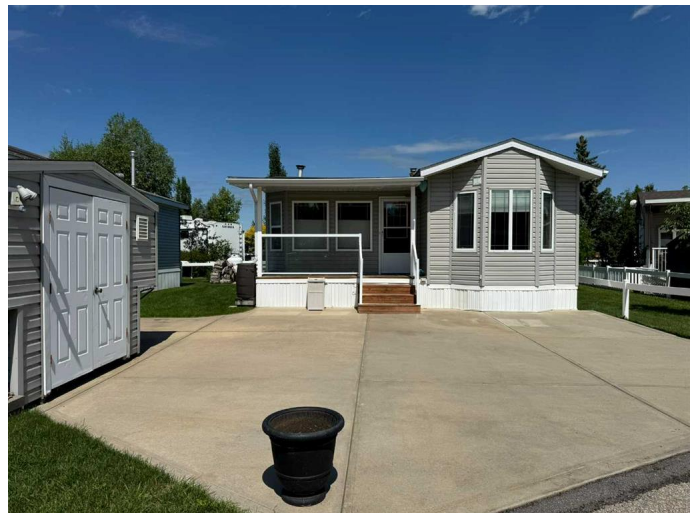
2 Bedroom, 1.00 Bathroom, 769 sqft
Residential on 0.07 Acres

Gleniffer Lake, Rural Red Deer County,
Alberta

Escape to your ideal getaway in this beautifully maintained 2-bedroom modular home, built with sturdy 2x6 walls for comfortable, four-season living. The open-concept design seamlessly connects the kitchen, dining, and living spaces â€” perfect for gatherings. The kitchen is thoughtfully designed with a large moveable island, pantry, dishwasher, and abundant storage. A bright addition floods the space with natural light through oversized windows, complemented by a cozy propane fireplace and A/C window units for comfort in every season. Skylights enhance the kitchenâ€™s warmth, and a charming barn door adds a stylish touch to the bathroom. Laundry is conveniently located in the heart of the home with a washer and dryer.

Start your mornings with coffee on the inviting front porch, or fire up the BBQ on the spacious back deck, complete with a large teak table, six chairs, and a generous umbrella. In the evenings, gather around the private firepit area, tucked behind a mature hedge â€” the perfect place to share stories and roast marshmallows. The easy-care yard requires just about 20 minutes of trimming and mowing, and thereâ€™s parking for three vehicles plus space for 1-2 golf carts.

Youâ€™ll love being just a quick five-minute



golf cart ride to both the golf course and the beach. At Gleniffer Lake Resort, enjoy an unmatched lifestyle with incredible amenities: three pools, hot tubs, a fully equipped fitness center, tennis and pickleball courts, two playgrounds, and private lake access for boating, fishing, and water activities. Golfers can sharpen their skills on the par 36 9-hole and par 3 courses, or try their hand at disc golf. This secure, gated community also offers a convenience store, restaurant, boat launch, and marina. With year-round activities, organized events, and a welcoming community, this is the perfect place to make lasting memories and embrace lake life.

Built in 2002

Essential Information

MLS® #	A2205055
Price	\$325,000
Bedrooms	2
Bathrooms	1.00
Full Baths	1
Square Footage	769
Acres	0.07
Year Built	2002
Type	Residential
Sub-Type	Detached
Style	Modular Home
Status	Active

Community Information

Address	3019, 35468 Range Road 30
Subdivision	Gleniffer Lake
City	Rural Red Deer County
County	Red Deer County
Province	Alberta
Postal Code	T4G 0M3

Amenities

Amenities	Beach Access, Clubhouse, Fitness Center, Park, Parking, Playground, Recreation Room, Secured Parking, Snow Removal, Trash, Visitor Parking, Boating, Coin Laundry, Dog Park, Golf Course, Indoor Pool, Outdoor Pool, Racquet Courts, Spa/Hot Tub
Parking Spaces	3
Parking	Parking Pad, Boat

Interior

Interior Features	Ceiling Fan(s), Closet Organizers, High Ceilings, Kitchen Island, Laminate Counters, No Animal Home, No Smoking Home, Open Floorplan, Pantry, Recessed Lighting, Smart Home, Track Lighting, Vinyl Windows, Skylight(s)
Appliances	Dishwasher, Dryer, Electric Stove, Microwave, Refrigerator, Wall/Window Air Conditioner, Washer, Window Coverings, Electric Water Heater
Heating	Fireplace(s), Central
Cooling	Wall/Window Unit(s)
Fireplace	Yes
# of Fireplaces	1
Fireplaces	Propane
Basement	None

Exterior

Exterior Features	BBQ gas line, Fire Pit, Rain Barrel/Cistern(s), Rain Gutters
Lot Description	Back Yard, Backs on to Park/Green Space, Landscaped, Lawn, Greenbelt
Roof	Asphalt Shingle
Construction	Vinyl Siding
Foundation	Piling(s)

Additional Information

Date Listed	March 24th, 2025
Days on Market	159
Zoning	R-7

Listing Details

Listing Office	Coldwell Banker Ontrack Realty
----------------	--------------------------------

Data is supplied by Pillar 9â„¢ MLS® System. Pillar 9â„¢ is the owner of the copyright in its MLS® System. Data is deemed reliable but is not guaranteed accurate by Pillar 9â„¢. The trademarks MLS®, Multiple Listing Service® and the associated logos are owned by The Canadian Real Estate Association (CREA) and identify the quality of services provided by real estate professionals who are members of CREA. Used under license.