

\$560,000 - 5 Erica Drive, Lacombe

MLS® #A2204622

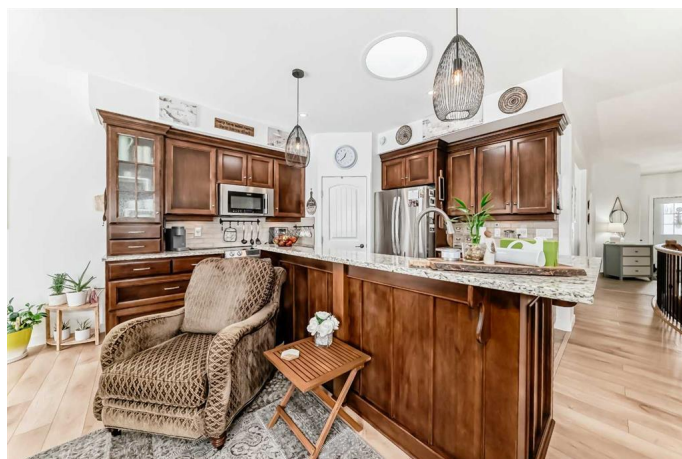
\$560,000

5 Bedroom, 3.00 Bathroom, 1,326 sqft

Residential on 0.14 Acres

Elizabeth Park, Lacombe, Alberta

EASY TO SHOW! Stunning Executive Bungalow in Elizabeth Park – Like New! Welcome to this impressive, fully finished 5-bedroom, 3-bathroom bungalow nestled in the highly sought-after neighborhood. This exceptional home backs onto a peaceful green space, offering both privacy and scenic views. Step inside and be greeted by a spacious tiled foyer and a striking maple staircase leading to the lower level. The main floor features a gorgeous kitchen with dark maple cabinetry, GRANITE countertops, a corner pantry, a large kitchen island, and premium stainless steel appliances, including an induction cooktop. The bright dining room boasts large windows that open to a beautiful deck, perfect for entertaining. The living room, with its cozy electric fireplace, is ideal for relaxing on cold winter nights. The spacious master bedroom offers a luxurious 5-piece ensuite with dual sinks, a custom shower, a soaker tub, and a walk-in closet. A front bedroom/den overlooks the covered porch, providing a perfect space for a home office or cozy retreat. Conveniently, the main floor also includes a dedicated laundry room. Down the stunning staircase, you’ll find a vast family/games room, three generously sized bedrooms, another 4-piece bathroom, and plenty of storage, including a cold room. Outside, the backyard oasis is an entertainer’s dream, featuring a deck, a wooden pergola, and a powered shed. There’s also RV storage alongside the garage and an exposed aggregate, HEATED



DRIVEWAY, meaning no more snow shoveling in the winter! This home is eco-friendly, equipped with SOLAR PANELS to reduce utility bills, and includes an UNDERGROUND SPRINKLER SYSTEM. Both the basement and garage are equipped with operational underfloor heating. The exterior is low-maintenance hardy board, and recent upgrades include fresh paint, updated interior and exterior LED lighting, triple-pane windows at the back, vinyl plank flooring, and solar tubes in the kitchen and laundry room. Some additional upgrades include added insulation in the attic, foam added under driveway, steel eavestroughs, new solar panels. Located in a fantastic neighborhood with wonderful neighbors, this property is ready to become your next dream home. Donâ€™t miss out â€“ schedule a viewing today!

Built in 2011

Essential Information

MLS® #	A2204622
Price	\$560,000
Bedrooms	5
Bathrooms	3.00
Full Baths	3
Square Footage	1,326
Acres	0.14
Year Built	2011
Type	Residential
Sub-Type	Detached
Style	Bungalow
Status	Active

Community Information

Address	5 Erica Drive
Subdivision	Elizabeth Park
City	Lacombe

County	Lacombe
Province	Alberta
Postal Code	T4L 0A4

Amenities

Parking Spaces	2
Parking	Double Garage Attached, Heated Garage
# of Garages	2

Interior

Interior Features	Granite Counters, High Ceilings, Kitchen Island, No Animal Home, No Smoking Home, Open Floorplan, Storage, Vinyl Windows, Walk-In Closet(s), Ceiling Fan(s), Sauna, Solar Tube(s)
Appliances	Dishwasher, Microwave, Refrigerator, Stove(s), Washer/Dryer
Heating	Forced Air, In Floor, Solar
Cooling	None
Has Basement	Yes
Basement	Finished, Full

Exterior

Exterior Features	Private Yard, Covered Courtyard, Private Entrance
Lot Description	Backs on to Park/Green Space, Landscaped, Rectangular Lot, Few Trees, No Neighbours Behind
Roof	Asphalt Shingle
Construction	Wood Frame, Composite Siding
Foundation	Poured Concrete

Additional Information

Date Listed	March 31st, 2025
Days on Market	30
Zoning	R1

Listing Details

Listing Office	2 Percent Realty Advantage
----------------	----------------------------

Data is supplied by Pillar 9â„¢ MLS® System. Pillar 9â„¢ is the owner of the copyright in its MLS® System. Data is deemed reliable but is not guaranteed accurate by Pillar 9â„¢. The trademarks MLS®, Multiple Listing Service® and the associated logos are owned by The Canadian Real Estate Association (CREA) and identify the quality of services provided by real estate professionals who are members of CREA. Used under license.