

\$265,000 - 35, 41310 Range Road 282, Rural Lacombe County

MLS® #A2203538

\$265,000

2 Bedroom, 1.00 Bathroom, 1,038 sqft
Residential on 0.08 Acres

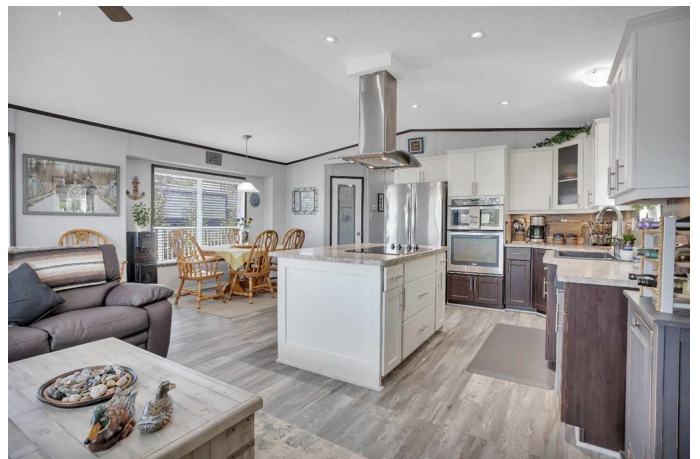
DeGraff Resort, Rural Lacombe County,
Alberta

Visit REALTOR website for additional information. Enjoy a laid back, beach side lifestyle in this beautiful 2 bed bungalow in DeGraff's Resort on Gull Lake. Situated on the lower road along the lake, this park model "cabin" is in Immaculate Condition with a beautiful, oversized yard & lake views! Watch the sun go down over the lake from the front porch! The secluded backyard & large deck are great spaces for R&R with family & friends! Featuring a gas fireplace, full sized contemporary kitchen & updated decor. Boathouse also available.

Built in 2016

Essential Information

MLS® #	A2203538
Price	\$265,000
Bedrooms	2
Bathrooms	1.00
Full Baths	1
Square Footage	1,038
Acres	0.08
Year Built	2016
Type	Residential
Sub-Type	Detached
Style	Bungalow



Status	Active
--------	--------

Community Information

Address	35, 41310 Range Road 282
Subdivision	DeGraff Resort
City	Rural Lacombe County
County	Lacombe County
Province	Alberta
Postal Code	T4L 1N3

Amenities

Amenities	Parking, Snow Removal, Trash
Parking	None

Interior

Interior Features	Breakfast Bar, Ceiling Fan(s), Kitchen Island, No Smoking Home, Open Floorplan, Pantry, Recessed Lighting, Soaking Tub, Vaulted Ceiling(s), Laminate Counters
Appliances	Dishwasher, Electric Range, Microwave, Refrigerator, Washer/Dryer, Window Coverings
Heating	Forced Air
Cooling	None
Fireplace	Yes
# of Fireplaces	1
Fireplaces	Gas
Has Basement	Yes
Basement	None, Crawl Space

Exterior

Exterior Features	Private Yard, Rain Gutters, Courtyard
Lot Description	Landscaped, Low Maintenance Landscape, Private, See Remarks, Standard Shaped Lot
Roof	Asphalt
Construction	Vinyl Siding, Wood Frame
Foundation	Piling(s)

Additional Information

Date Listed	March 20th, 2025
Days on Market	41
Zoning	RVR

Listing Details

Listing Office PG Direct Realty Ltd.

Data is supplied by Pillar 9â„¢ MLS® System. Pillar 9â„¢ is the owner of the copyright in its MLS® System. Data is deemed reliable but is not guaranteed accurate by Pillar 9â„¢. The trademarks MLS®, Multiple Listing Service® and the associated logos are owned by The Canadian Real Estate Association (CREA) and identify the quality of services provided by real estate professionals who are members of CREA. Used under license.